

Monmouth Close, London, W4 5DQ

Guide Price £465,000

**WHITMAN & CO.**

SALES · LETTINGS · COMMERCIAL

- Two double bedroom apartment
- Well maintained communal garden
- Share of the freehold
- Triple aspect
- Allocated off-street parking
- Sought after location

Tenure - Leasehold with share of freehold  
 Lease length - 990 years remaining  
 Ground rent - Peppercorn  
 Service charge - £2,008 pa  
 Local authority - Ealing  
 Council tax - Band E

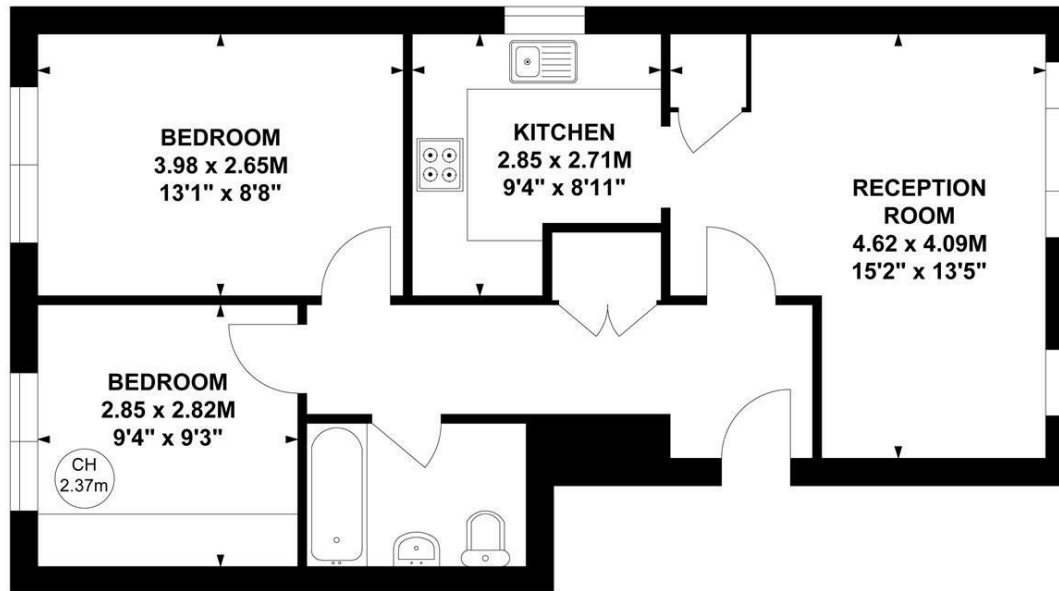
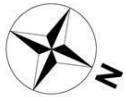
## THE PROPERTY

An incredibly light, triple-aspect ground-floor two-bedroom apartment set within this private development, located within a short walk from Chiswick High Road, and benefiting from communal gardens and allocated off-street parking. This immaculately presented apartment comprises a 15' reception room with a dining area, a modern fitted kitchen, two double bedrooms, one with fitted wardrobes, a contemporary bathroom with a shower over the bath, a spacious entrance hall, allocated off-street parking, a large communal garden, and a share in the freehold. Located within a short walk of Chiswick High Road's shops, cafes, and restaurants, as well as local gastro pubs. Transport links include Chiswick Park, Turnham Green, and South Acton stations, local bus routes, and the A4/M4 for routes in and out of London.

## Monmouth Close, W4

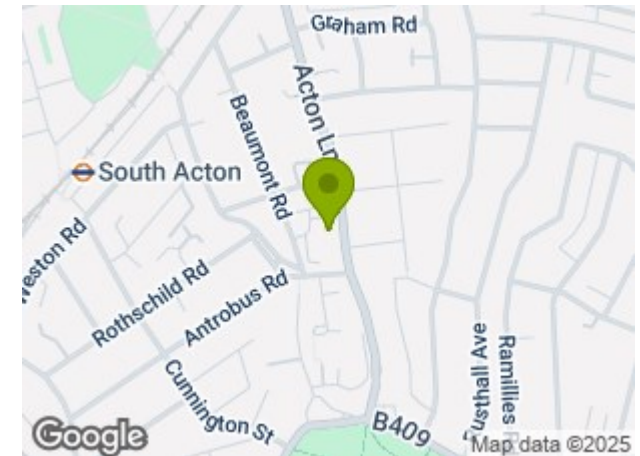
Approximate Gross Internal Area  
 56.25 sq m / 605 sq ft

Key :  
 CH - Ceiling Height



Not to scale, for guidance only and must not be relied upon as a statement of fact.  
 All measurements and areas are approximate only

## SITUATION



5-7 Turnham Green Terrace, Chiswick, London, W4 1RG

Tel 020 8747 8800

E-mail [sales@whitmanandco.com](mailto:sales@whitmanandco.com)

Website [www.whitmanandco.com](http://www.whitmanandco.com)



MISREPRESENTATION ACT 1967

Whitman & Co. for themselves and for the vendors give notice that these particulars do not constitute any part of, an offer of contract. All statements contained in these particulars are made without responsibility on the part of Whitman & Co. or the vendor. None of the statements contained in these particulars is to be relied upon as statements or representations of facts. Any intending purchaser must satisfy himself by inspection or otherwise as to the correctness of each of the statements contained in these particulars. The vendor does not make or give, and neither Whitman & Co. or any person in their employment has any authority to make or give, any representation or warranty whatever in relation to the property.